

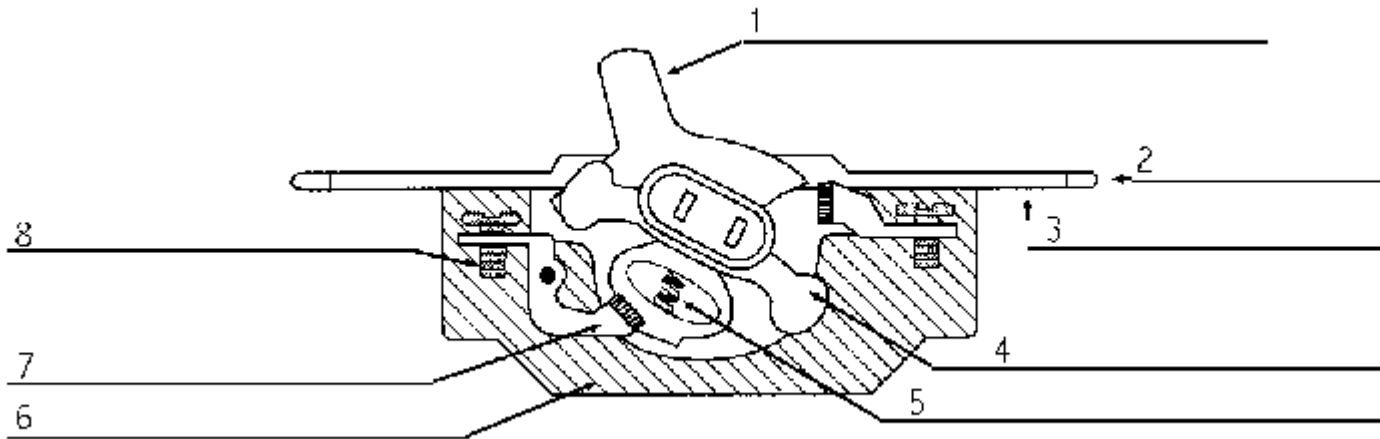


The Single Pole Toggle Switch

Purpose:

Used to safely interrupt or control the power supply to a load using a spring loaded set of special metal contacts with minimum arcing.

Parts and Construction:



Operation:

In open or load off position, the toggle switch is pushed up and the jaw and spring assembly snap the jaw contacts together with blade contacts, closing the circuit therefore turning on the load (light, fan, etc.).

Safety:

The contacts are made of brass, to minimize wear and maximize contact, while the spring minimizes the arc through a fast connection and the enclosure keeps the spark encased, making it safe to switch demanding loads.